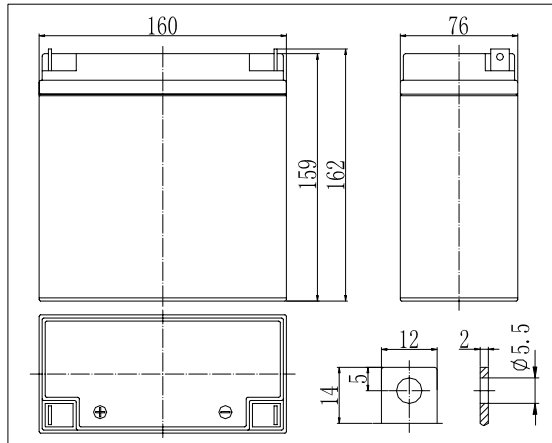
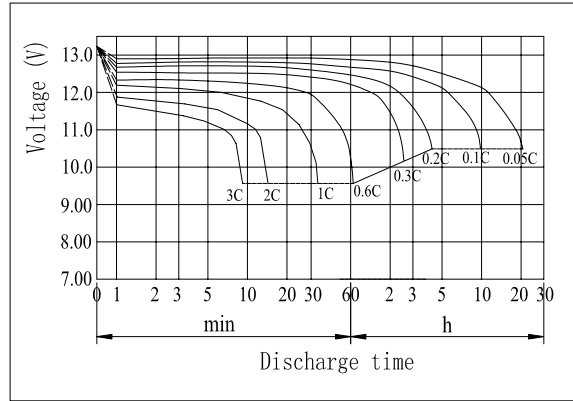


Dimensions



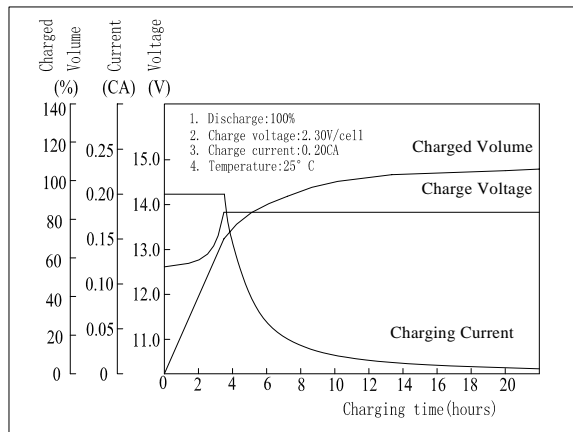
Discharge Characteristics(25°C)



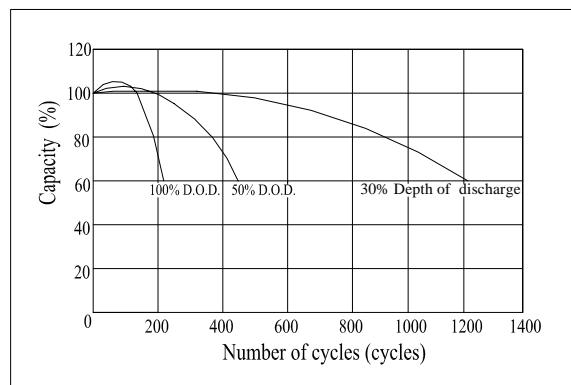
Specifications

Nominal Voltage	12 V	
Capacity(20HR, 25°C)	15 Ah	
Dimension	Length	160mm +/- 1mm
	Width	76mm +/- 1mm
	Height	159mm +/- 1mm
	Total Height	162mm +/- 1mm
Approx. Weight	4.60kg	
Internal resistance (Fully charged, 25°C)	Approx. 19mΩ	
Capacity affected by temperature (20HR)	40°C	102%
	25°C	100%
	0°C	85%
	-15°C	65%
Self-discharge (25°C)	3 month	Remaining Capacity: 91%
	6 month	Remaining Capacity: 82%
	12 month	Remaining Capacity: 65%
Nominal temperature range	25°C±3°C	
Operation temperature range	-15°C -50°C	
Float charging voltage(25°C)	13.60 to 13.80V	
Cyclic charging voltage(25°C)	14.50 to 14.90V	
Maximum charging current	6A	
Terminal material	Copper	
Maximum discharge current	225A(5 sec.)	

Charging Characteristics(25°C)



Cycle Life(25°C)



Note: Floating life at 25°C designed for 3 to 5 years.

- Absorbent glass mat technology;
- Recognized by UL & CE;
- Flame retardant ABS container (UL94V-0/ 94V-2).

Constant Current Discharge Characteristics (A, 25°C)

F.V/TIME	5min	10min	15min	30min	60min	3h	5h	10h	20h
9.60V	56.0	36.0	29.0	16.0	9.70	3.70	2.54	1.40	0.76
10.2V	53.2	34.2	27.8	15.4	9.31	3.65	2.50	1.39	0.75
10.8V	50.0	32.1	26.4	14.6	8.85	3.58	2.45	1.38	0.75

Constant Power Discharge Characteristics (Watt, 25°C)

F.V/TIME	5min	10min	15min	30min	60min	3h	5h	10h	20h
9.60V	625	406	331	183	112	44.0	30.3	16.8	9.14
10.2V	594	386	317	176	108	43.4	29.9	16.7	9.05
10.8V	558	363	302	167	102	42.5	29.3	16.7	9.00