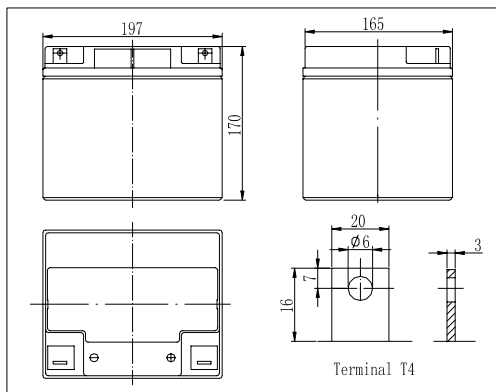
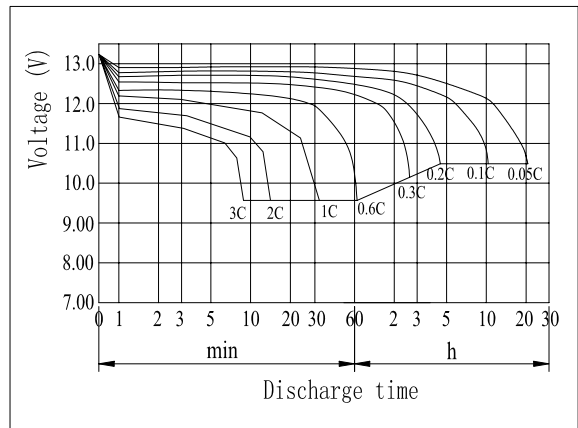


Dimensions



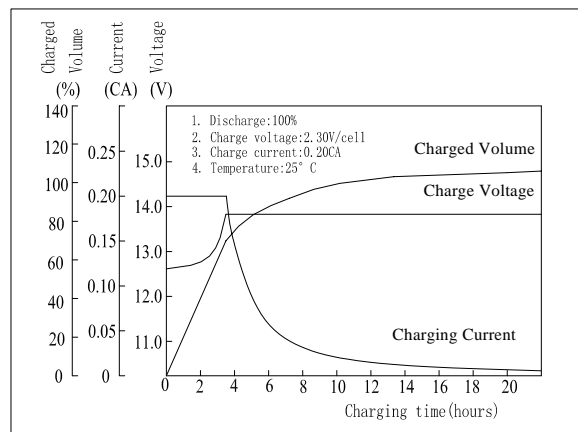
Discharge Characteristics (25°C)



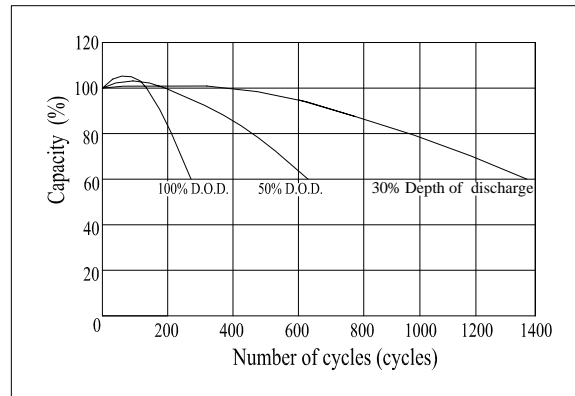
Specifications

Nominal Voltage	12 V	
Capacity (10HR, 25°C)	36Ah	
Dimension	Length	197mm
	Width	165mm
	Height	170mm
	Total Height	170mm
Approx. Weight	13.0kg	
Internal resistance (Fully charged, 25°C)	Approx. 9.8mΩ	
Capacity affected by temperature (10HR)	40°C	102%
	25°C	100%
	0°C	85%
	-15°C	65%
Self-discharge (25°C)	3 month	Remaining Capacity: 91%
	6 month	Remaining Capacity: 82%
	12 month	Remaining Capacity: 65%
Nominal operating temperature	25°C ± 3°C	
Operating temperature range	-15°C – 50°C	
Float charging voltage (25°C)	13.50 to 13.80V	
Cyclic charging voltage (25°C)	14.50 to 14.90V	
Maximum charging current	10.8A	
Terminal material	Copper	
Maximum discharge current	360A (5 sec.)	

Charging Characteristics (25°C)



Cycle Life (25°C)



Note: Floating life at 20°C designed for 7 to 10 years.

- Absorbent glass mat technology;
- Recognized by UL & CE;
- Flame retardant ABS container (UL94V-0/ 94V-2).

Constant Current Discharge Characteristics (A, 25°C)

F.V/TIME	5min	10min	15min	30min	60min	3h	5h	10h	20h
9.60V	116	77.1	60.0	37.8	22.9	9.32	6.58	3.65	1.92
10.2V	110	73.3	57.6	36.3	22.0	9.18	6.48	3.62	1.90
10.8V	103	68.9	54.7	34.5	20.9	9.00	6.35	3.60	1.89

Constant Power Discharge Characteristics (Watt, 25°C)

F.V/TIME	5min	10min	15min	30min	60min	3h	5h	10h	20h
9.60V	1215	833	659	424	261	110	77.7	43.6	23.0
10.2V	1154	791	632	407	251	108	76.6	43.2	22.8
10.8V	1085	744	601	387	238	106	75.1	43.2	22.7