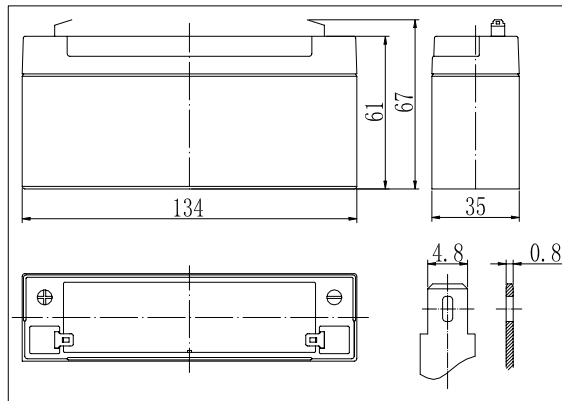
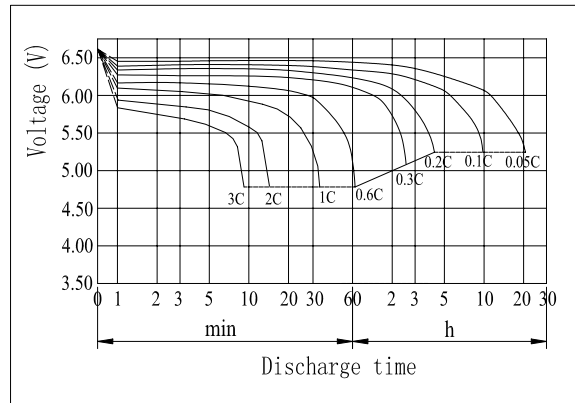


**Dimensions**



**Discharge Characteristics(25°C)**

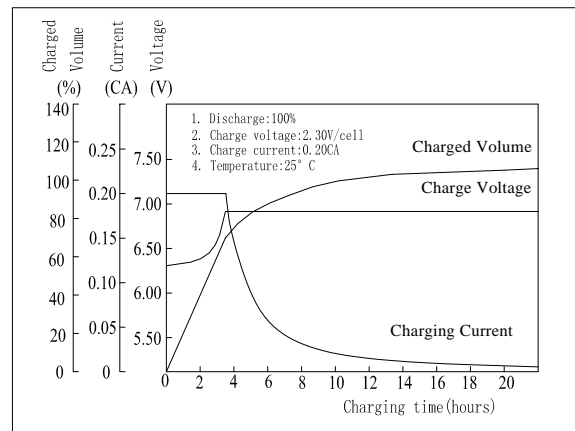


**Specifications**

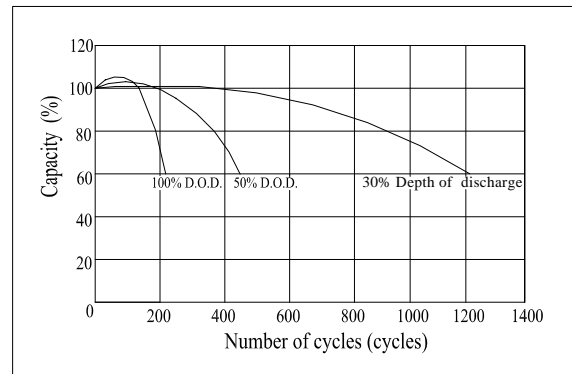
Nominal Voltage		6 V
Capacity(20HR, 25°C)		3.2Ah
Dimension	Length	134mm +/- 1mm
	Width	35mm +/- 1mm
	Height	61mm +/- 1mm
	Total Height	67mm +/- 1mm
Approx. Weight		0.71kg
Internal resistance (Fully charged, 25°C)		Approx. 30mΩ
Capacity affected by temperature (20HR)	40°C	102%
	25°C	100%
	0°C	85%
	-15°C	65%
Self-discharge (25°C)	3 month	Remaining Capacity: 91%
	6 month	Remaining Capacity: 82%
	12 month	Remaining Capacity: 65%
Nominal operating temperature		25°C±3°C
Operating temperature range		-15°C-50°C
Float charging voltage(25°C)		6.80 to 6.90V
Cyclic charging voltage(25°C)		7.25 to 7.45V
Maximum charging current		1.3A
Terminal material		Copper
Maximum discharge current		48A(5 sec.)

- Absorbent glass mat technology;
- Recognized by UL & CE;
- Flame retardant ABS container (UL94V-0/ 94V-2).

**Charging Characteristics(25°C)**



**Cycle Life(25°C)**



Note: Floating life at 25°C designed for 3 to 5 years.

**Constant Current Discharge Characteristics (A, 25°C)**

F.V/TIME	5min	10min	15min	30min	60min	3h	5h	10h	20h
4.80V	12.2	7.68	6.08	3.52	2.08	0.81	0.55	0.30	0.16
5.10V	11.6	7.30	5.84	3.38	2.00	0.80	0.54	0.30	0.16
5.40V	10.9	6.86	5.54	3.21	1.90	0.78	0.53	0.29	0.16

**Constant Power Discharge Characteristics (Watt, 25°C)**

F.V/TIME	5min	10min	15min	30min	60min	3h	5h	10h	20h
4.80V	67.9	43.3	34.7	20.2	12.0	4.82	3.30	1.79	0.97
5.10V	64.5	41.1	33.3	19.4	11.6	4.75	3.25	1.78	0.97
5.40V	60.6	38.7	31.6	18.4	11.0	4.66	3.18	1.78	0.96